

Proposed spaces to be redesigned:

1. Building Façade
2. Main Lobby
3. President's Office
4. Training Room

## 1. Building Façade

The building has a more traditional architectural style where the main components are:

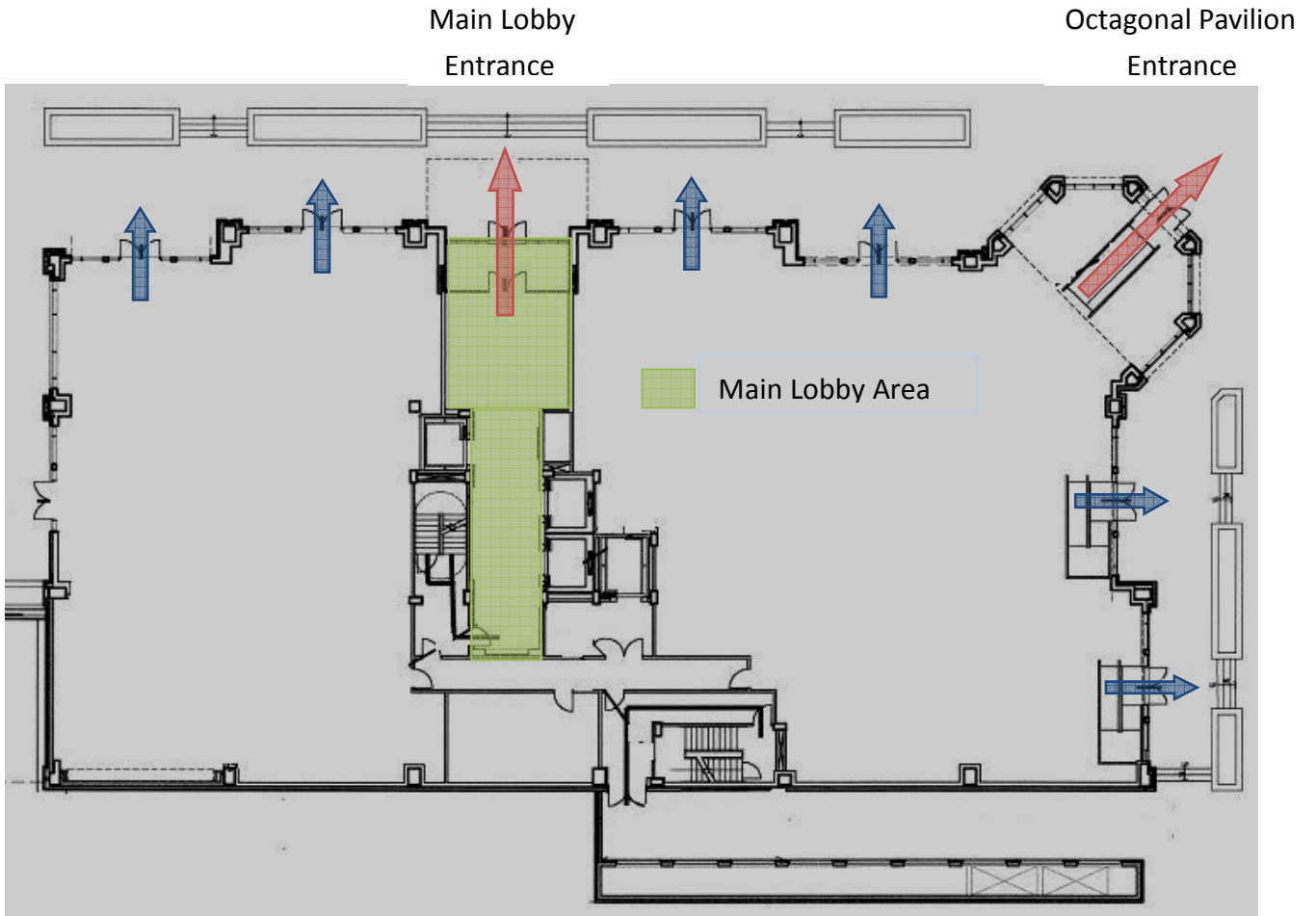
1. Brick
2. Precast Concrete
3. Glass

There are several entrances on the 1<sup>st</sup> floor while two of them lead the main circulation into the building, and the rest are for retail purposes. The 1<sup>st</sup> major entrance is located at the north side of the building and connects to the main lobby while the 2<sup>nd</sup> one is located at the octagonal pavilion.

The dimensions of the walls are approximately 60' (Height) x 200' (Length) on the long sides (north & south) and 60' x 90' on the short sides.



[Figure 1 – major materials on the facade]



[Figure 2 – Red arrows indicate major entrances, Blue arrows indicate retail entrances]

## 2. Main Entry Lobby

The main entry lobby has two interior components: the atrium space & the elevator lobby.

The atrium is one piece of traditional architecture with a huge dome-shaped ceiling opening, and the side walls are made of stones where artwork displays or visual informations will be enclosed.

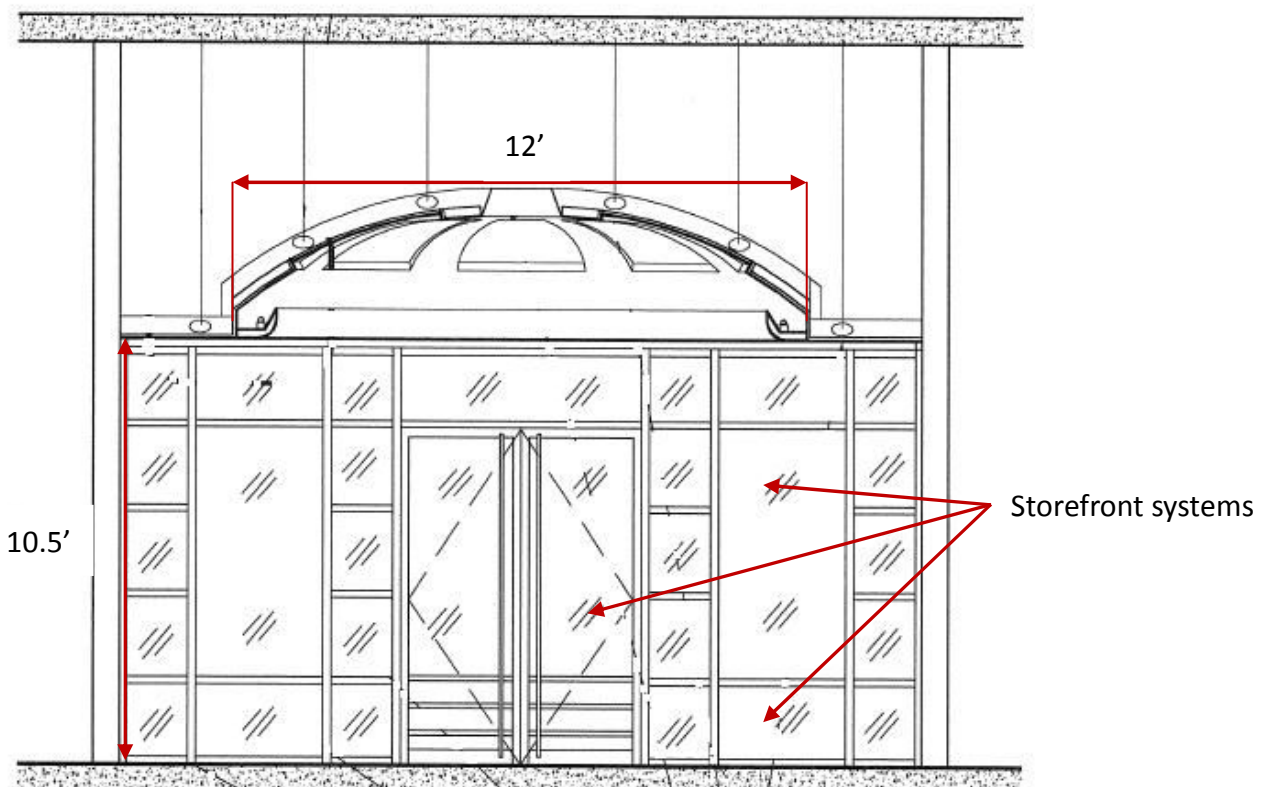
There is an elevator lobby across the corridor with one elevator leads to the underground parking levels and two occupancy elevators lead to office spaces on upper levels. Under the recessed ceiling in the elevator lobby, there is a directory display showing company names and corresponding location in the building, is placed on the wall next to one occupancy elevator. Besides, there is a glass alcove at the end of corridor where it is supposed to convey visual informations as well.

Therefore, it is believed that there will be frequent flow of circulation within the lobby area where people are either lined up for elevators or reading informations from walls.

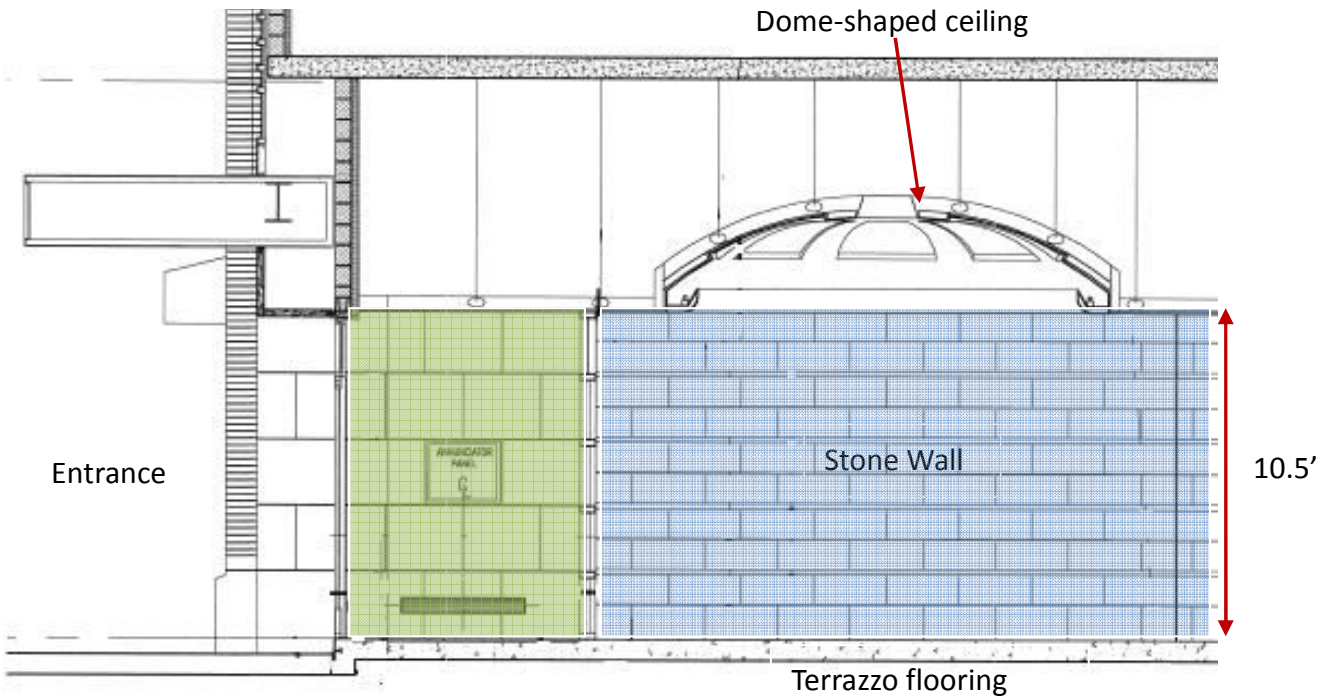
The key materials used in the lobby area are:

1. Gypsum wall board on the ceiling
2. Stone on the side walls
3. Terrazzo flooring
4. Aluminum on elevator gates
5. Tempered glass on storefront systems

The key dimensions will be shown in following figures:

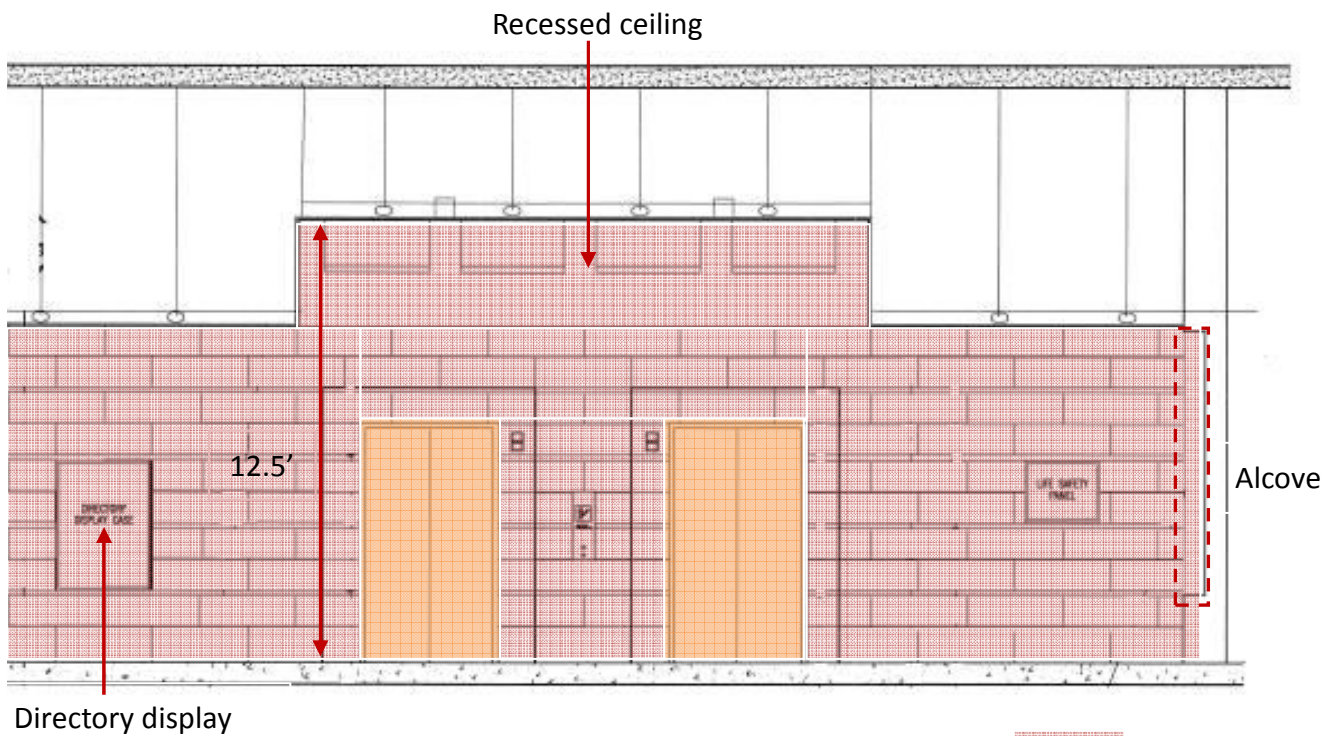


[Figure 3 – Interior section looking from lobby area to entrance door]



[Figure 4 – Partial Elevation of Atrium]

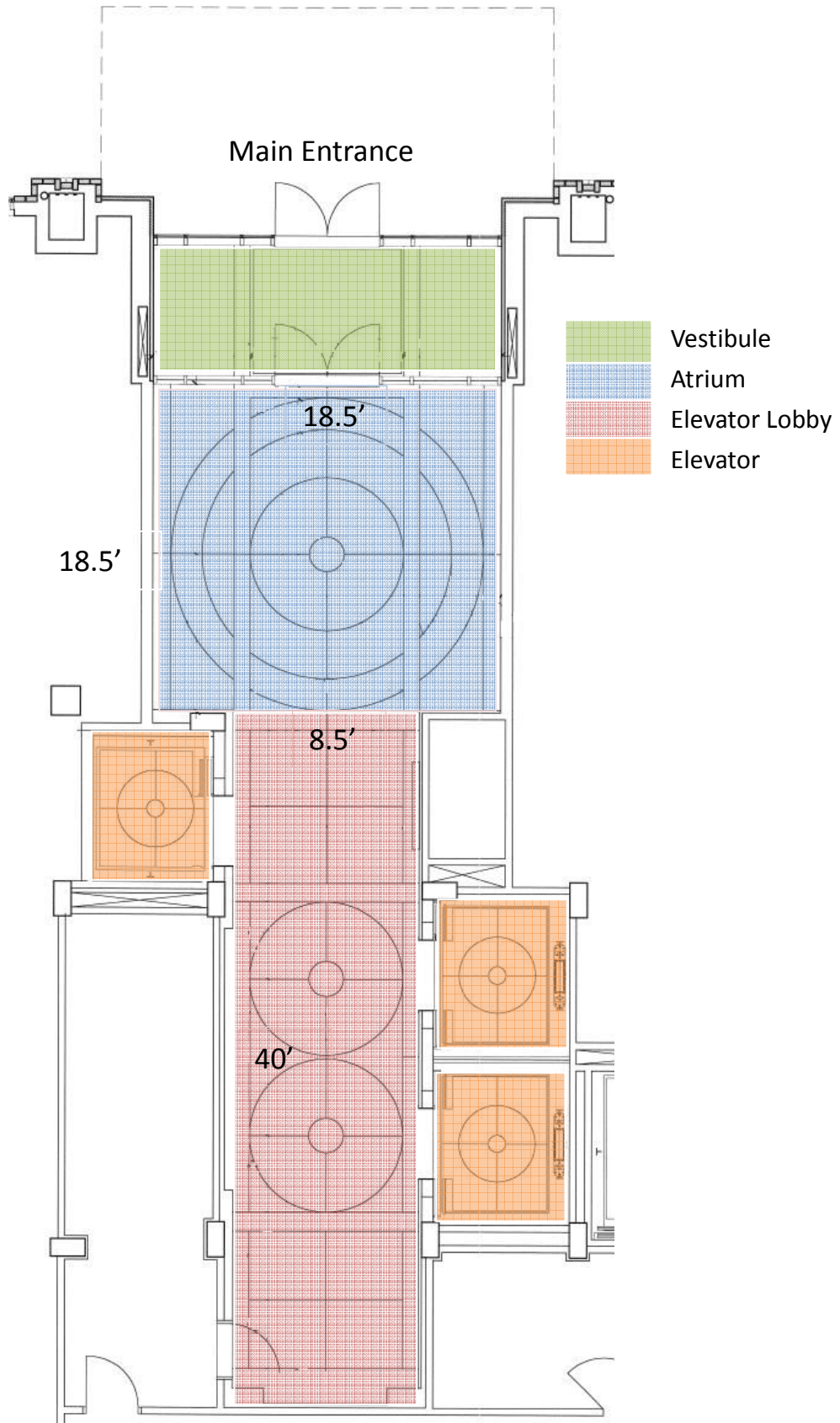
- Vestibule
- Atrium



[Figure 5 – Partial Elevation of Elevator Lobby]

- Elevator Lobby
- Elevator





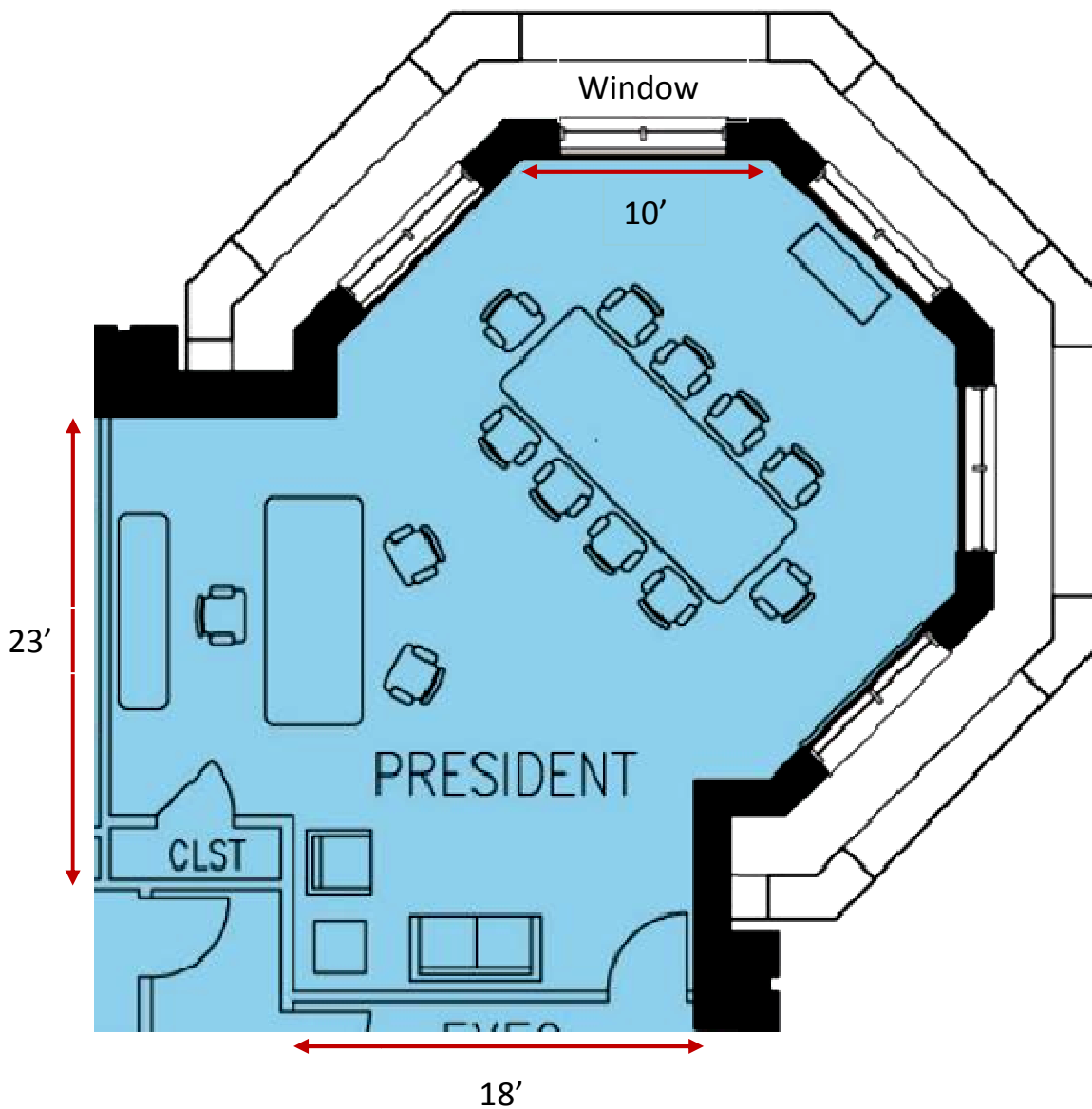
[Figure 6 – Partial Floor Plan of Main Lobby]

### 3. President's Office

The President's Office is located on the 4<sup>th</sup> floor, sitting on top of the octagonal pavilion at the corner of the building. The shape of the room is like a half octagon merged with a rectangle.

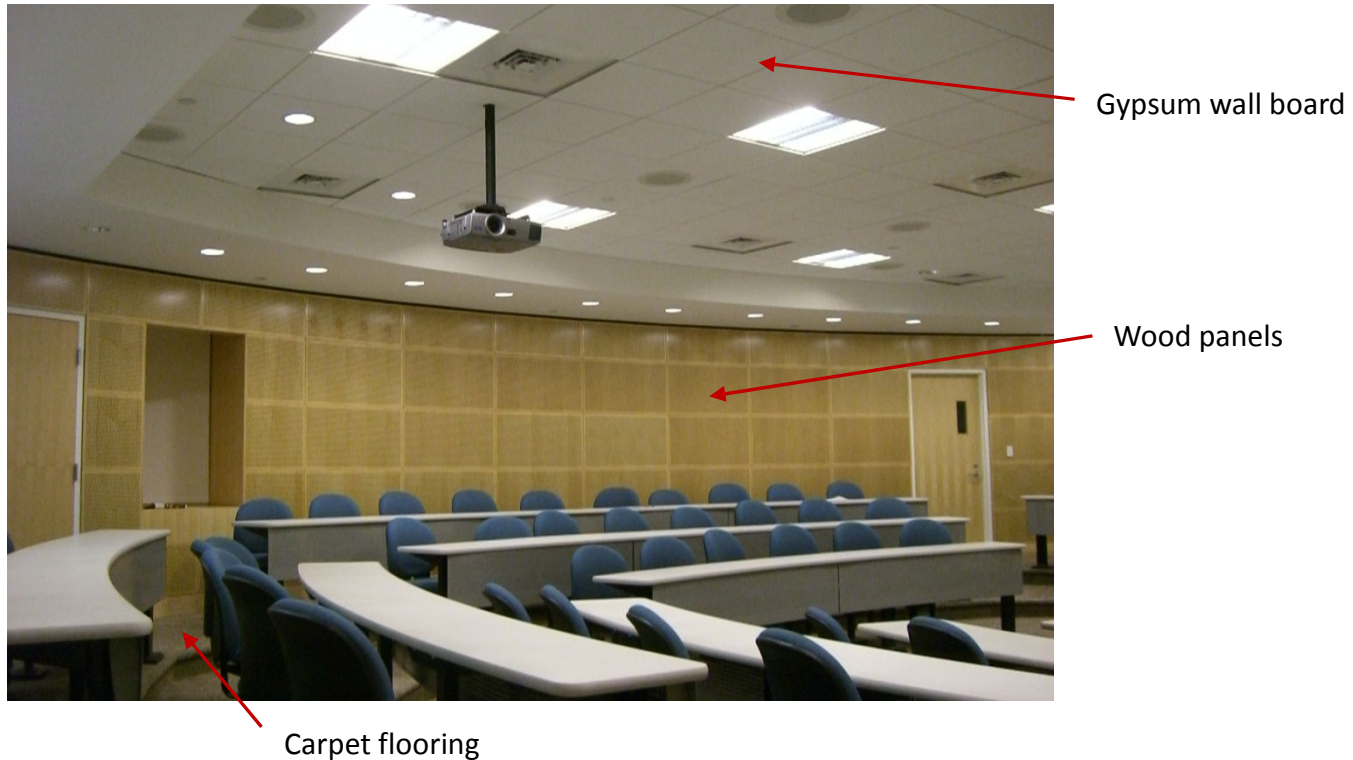
The president performs daily tasks in his office, typically like reading and writing, meeting with clients and having conference in the room.

The area of the president's office is approximately 900 ft<sup>2</sup> with a ceiling height of 13.5'. Each side of the octagon is about 10' long, having a 6' (width) x 6' (height) window in the middle of the wall.



[Figure 7 – Floor plan of president's office]

The key materials used in the space will be similar to the interior in Smeals Building, which are gypsum wall board on the ceiling, wood panels on the wall, and carpeted floor.

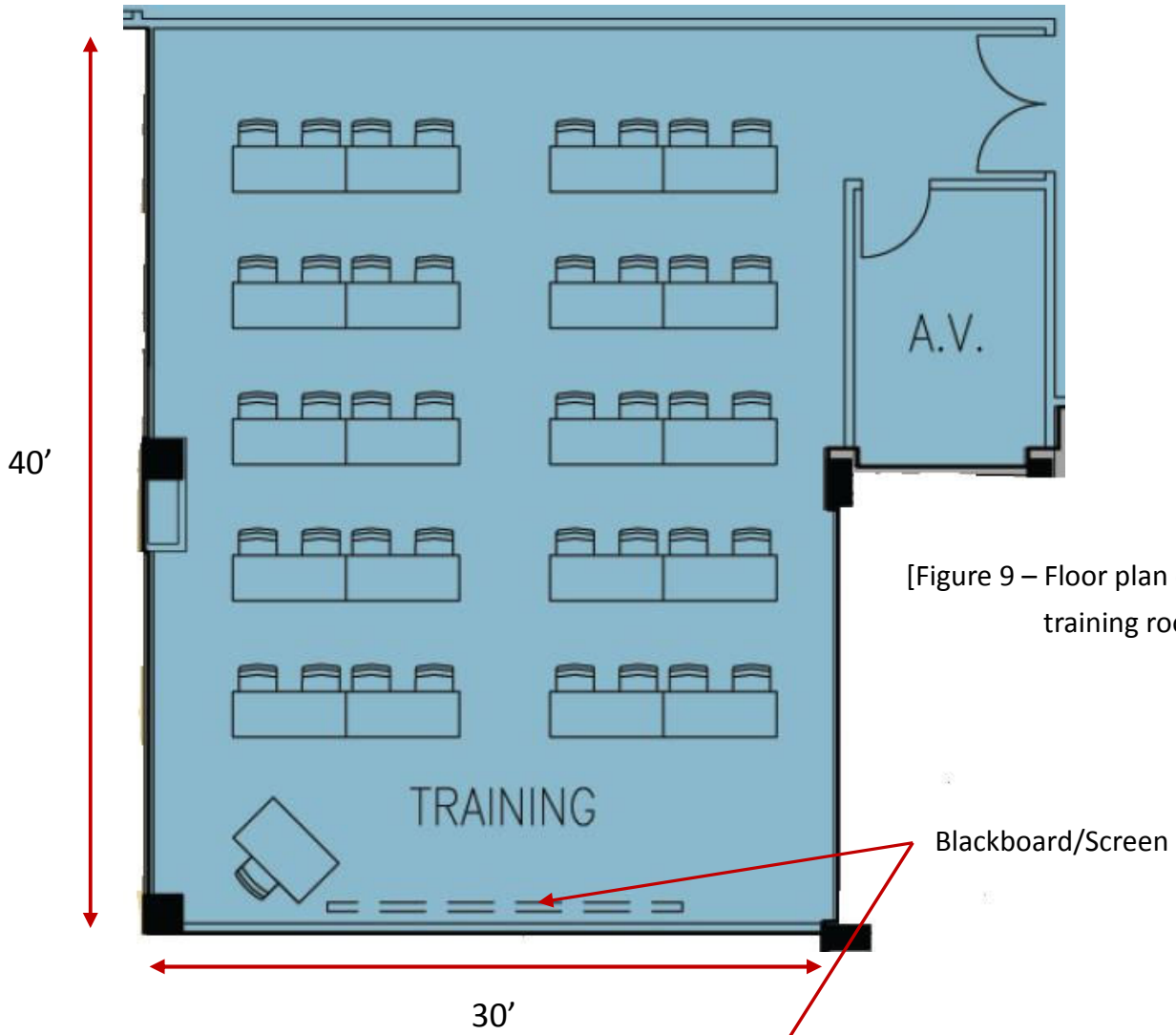


[Figure 8 – Image of lecture room in Business building to show the materials used]

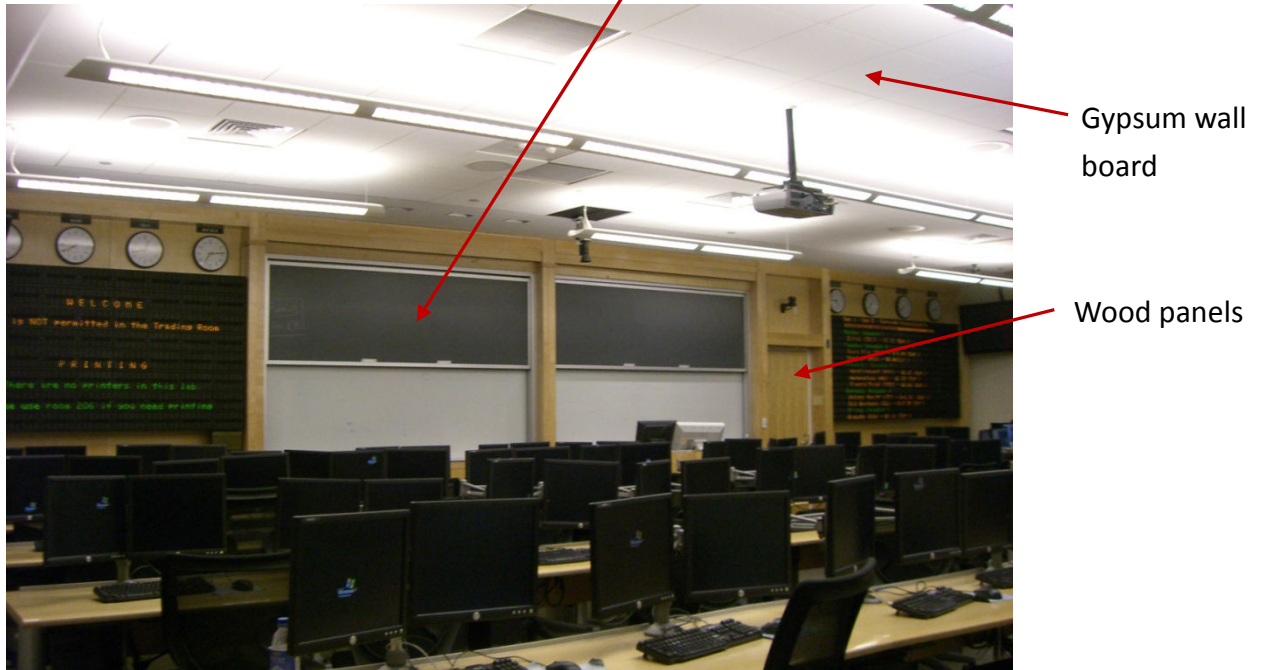
#### 4. Training Room

The rectangular training room located on the 3<sup>rd</sup> floor, having an approximate dimension of 40' (length) x 30' (width) x 13.5' (ceiling height) and a 1200 ft<sup>2</sup> of area. The room layout is like a typical classroom, where there are tables and seats for the audience, a podium and a screen for lecture purpose.

The key materials used are similar to those in Business Building, which will be gypsum wall board on the ceiling, wood panels on the wall, and carpet on the floor.



[Figure 9 – Floor plan of the training room]



[Figure 10 – Image of a computer lab in Business Building to show materials used.]